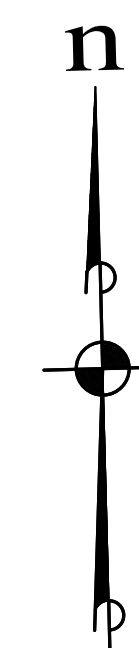
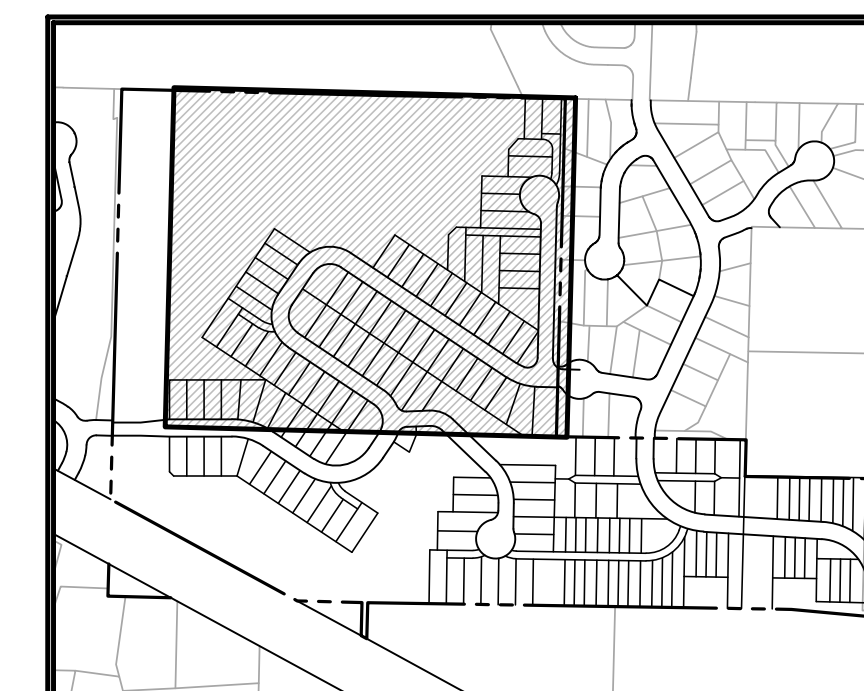


5465-000-076



SCALE: 1" = 40'  
CONTOUR INTERVAL = 5'



LEGEND

- - - - - EXISTING CONTOUR
- - - - - PROPOSED CONTOUR
- - - - - CLEARING LIMITS

NOTES:

- SITE GRADING IS PRELIMINARY AT THIS TIME AND IS SHOWN FOR CONCEPTUAL PURPOSES ONLY. FINAL GRADING IS SUBJECT TO CHANGE IN ORDER TO MORE ACCURATELY BALANCE CUT AND FILL QUANTITIES.

PRELIMINARY EARTHWORK QUANTITIES

STRIPPING (ASSUMED 18")	63,720 CYDS
USEABLE CUT:	176,590 CYDS
REQUIRED FILL:	262,200 CYDS
NET FILL:	85,610 CYDS

REVISIONS		
NO.	DESCRIPTION/DATE	BY

**ESM CONSULTING ENGINEERS, LLC**  
 33400 8th Ave S, Suite 205  
 Federal Way, WA 98003  
 www.esmcivil.com

Professional Engineer  
 License No. 50068  
 State of Washington  
 06/20/2025

Land Planning  
 Project Management  
 Landscape Architecture

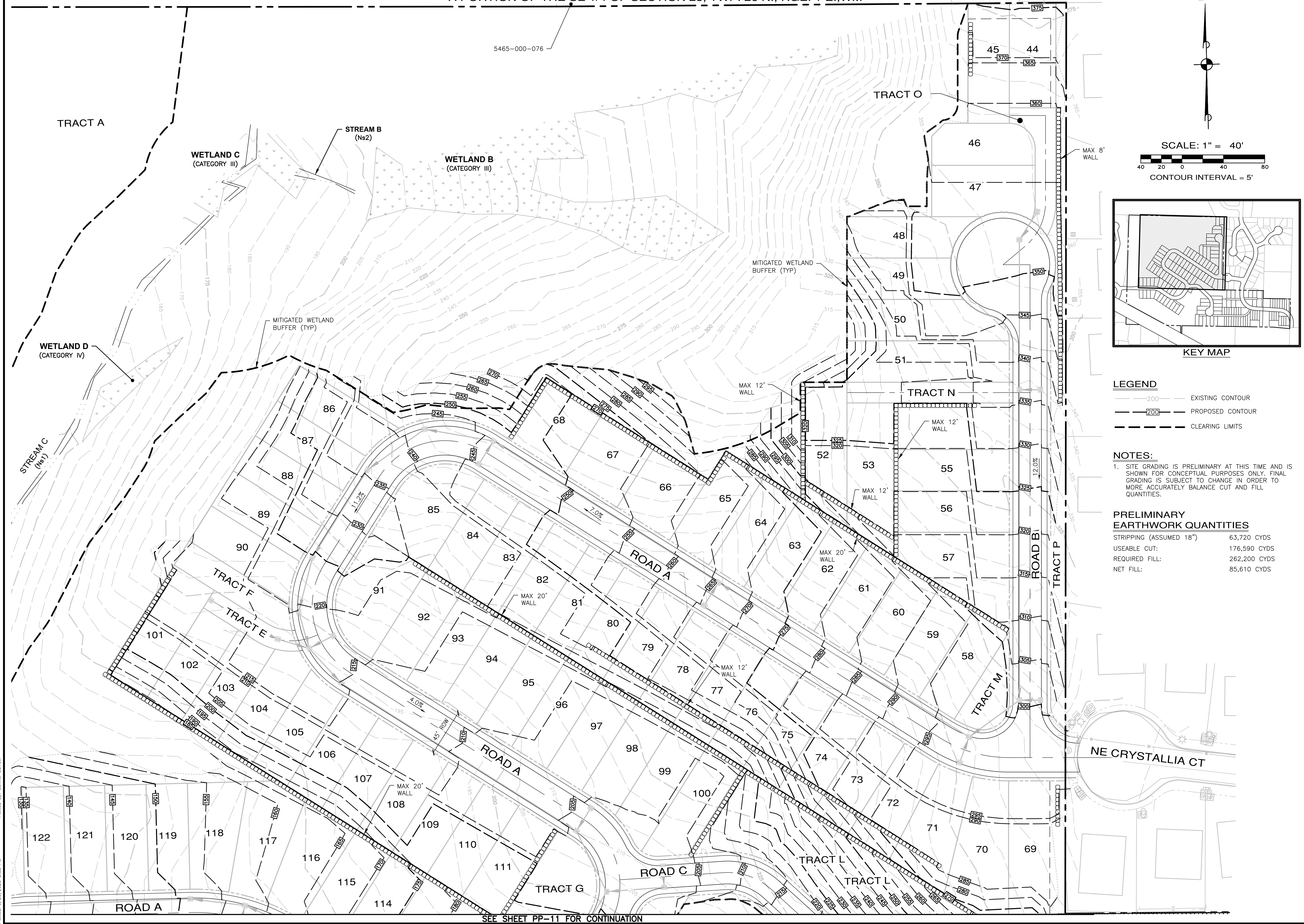
**MONTEBANC MANAGEMENT, LLC**  
**PINNACLE AT LIBERTY BAY SUBDIVISION**  
 PRELIMINARY GRADING PLAN

CITY OF POULLSBORO WASHINGTON

JOB NO.: 2090-004-022  
 DWG. NAME: PP-10  
 DESIGNED BY:  
 DRAWN BY:  
 CHECKED BY:  
 DATE: 6/20/2025  
 DATE OF PRINT:

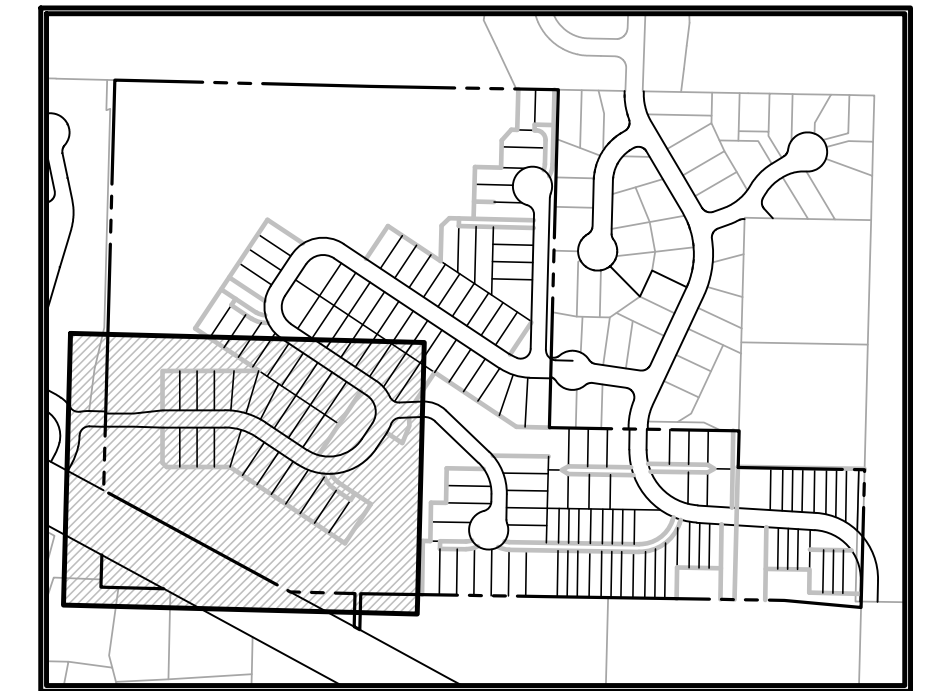
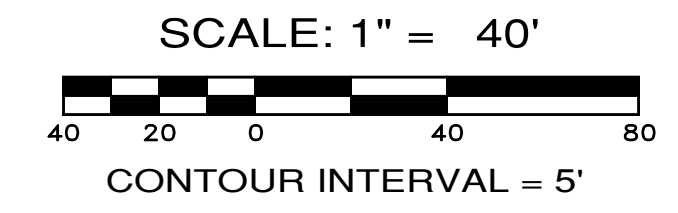
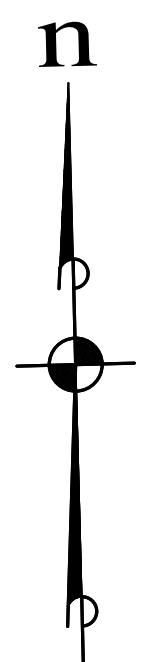
PP-10  
 10 OF 26 SHEETS

File: \\smc\eng\ESM-0085\2090\004\022\PP-10.dwg  
 Plotted: 6/20/2025 2:38 PM  
 Plotted By: Corinne Corbett



SEE SHEET PP-11 FOR CONTINUATION

SEE SHEET PP-10 FOR CONTINUATION



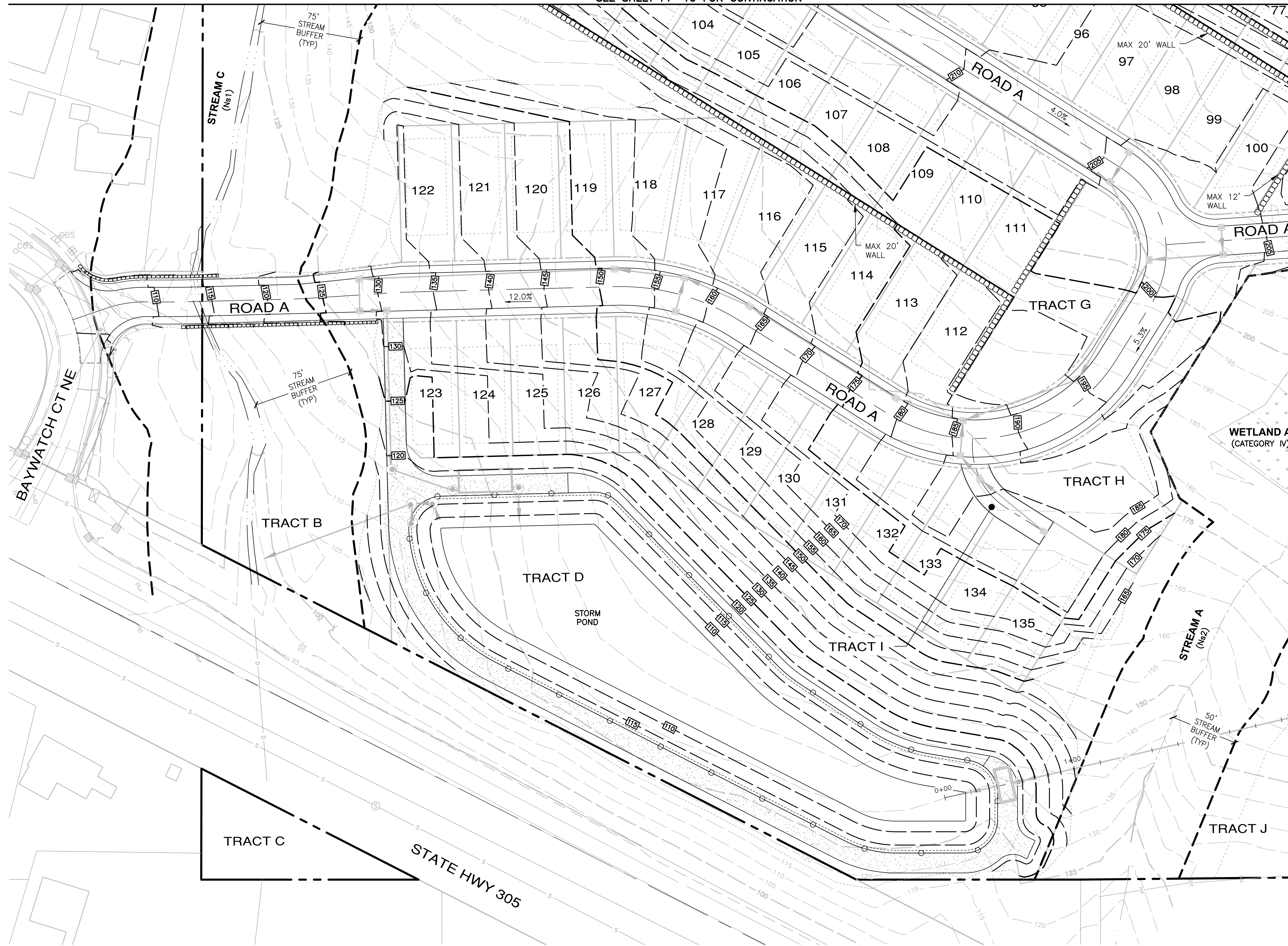
KEY MAP

LEGEND

- - - 200 - - - EXISTING CONTOUR
- - - 200 - - - PROPOSED CONTOUR
- - - - - CLEARING LIMITS

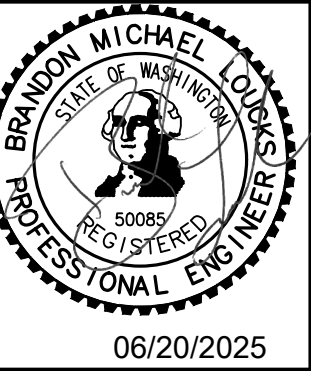
NOTES:

1. SITE GRADING IS PRELIMINARY AT THIS TIME AND IS SHOWN FOR CONCEPTUAL PURPOSES ONLY. FINAL GRADING IS SUBJECT TO CHANGE IN ORDER TO MORE ACCURATELY BALANCE CUT AND FILL QUANTITIES.



SEE SHEET PP-10 FOR CONTINUATION

REVISIONS		
NO.	DESCRIPTION/DATE	BY



**ESM CONSULTING ENGINEERS, LLC**  
 33400 8th Ave S, Suite 205  
 Federal Way, WA 98003  
 www.esmcivil.com

Civil Engineering | Land Surveying | Project Management | Landscape Architecture  
 Public Works | Land Planning | Landscape Architecture

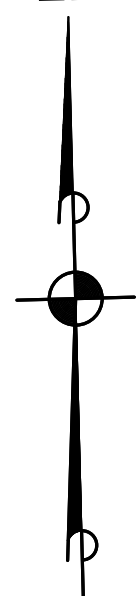
**MONTEBANC MANAGEMENT, LLC**  
**PINNACLE AT LIBERTY BAY SUBDIVISION**  
 PRELIMINARY GRADING PLAN  
 WASHINGTON  
 CITY OF POULSBORO

JOB NO.:	2090-004-022
DWG. NAME:	PP-11
DESIGNED BY:	
DRAWN BY:	
CHECKED BY:	
DATE:	6/20/2025
DATE OF PRINT:	

File: \\smc\eng\ESM-085\2090\004\022\PP-11.dwg  
 Plotted: 6/20/2025 2:40 PM  
 Plotted By: Corrie Corbett

A PORTION OF THE SE 1/4 OF SECTION 23, TWP. 26 N., RGE. 1 E., WM

n



SCALE: 1" = 40'



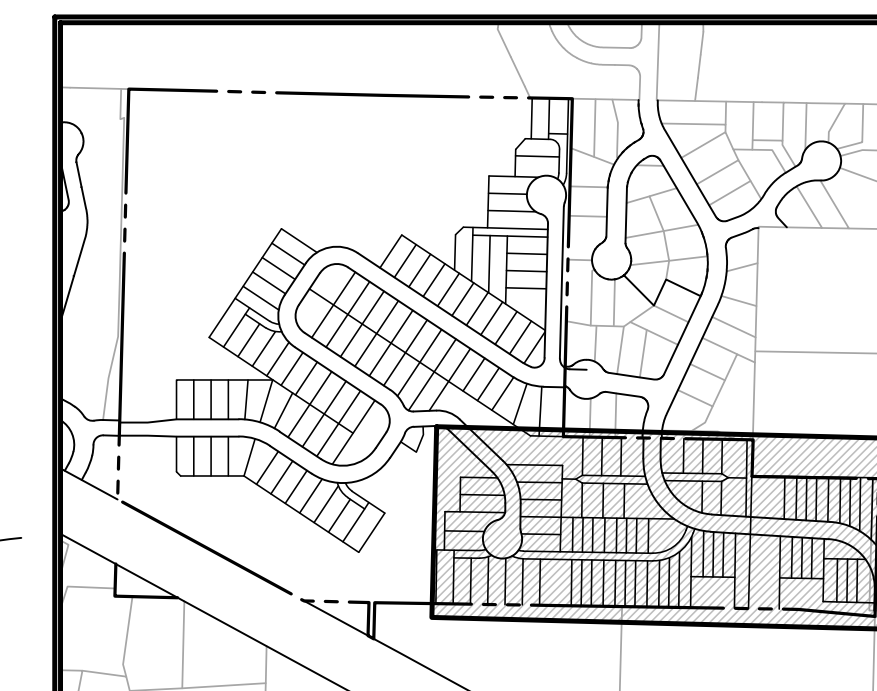
CONTOUR INTERVAL = 5'

LEGEND

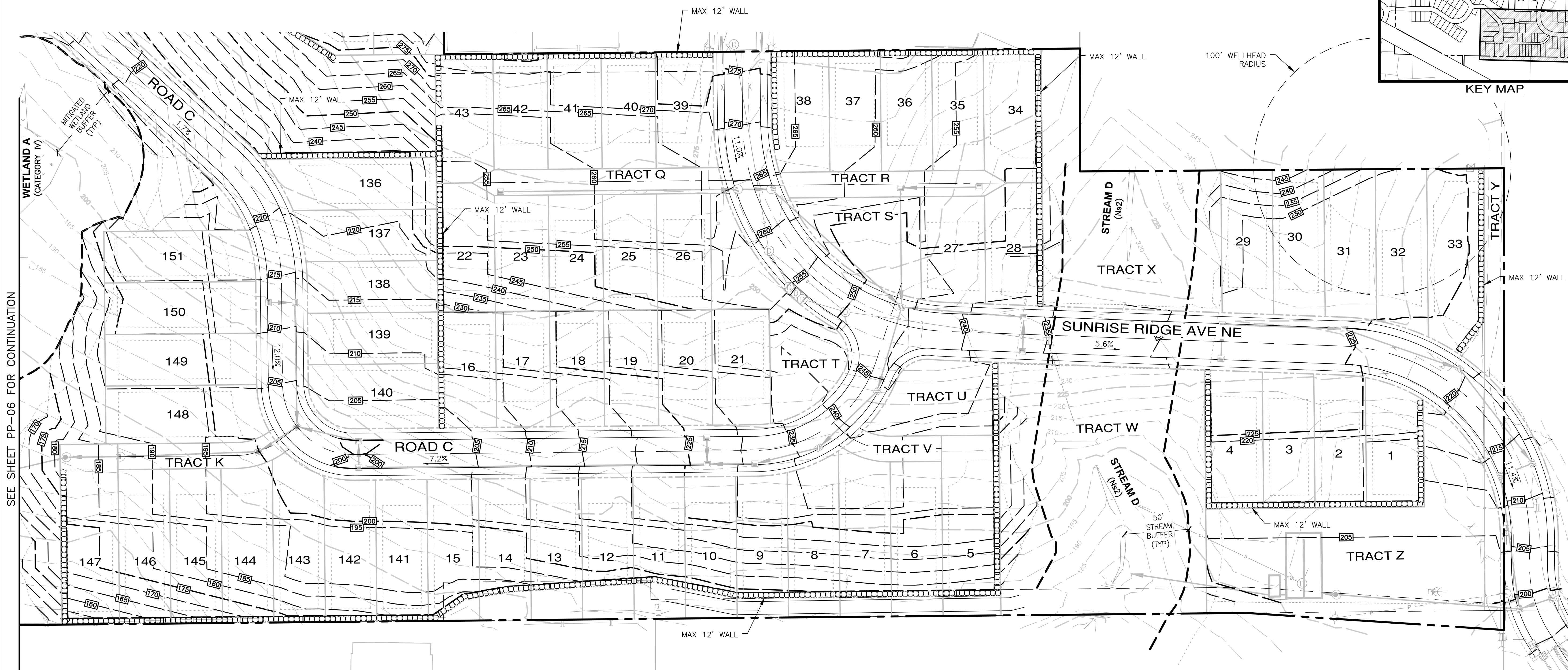
- 200 — EXISTING CONTOUR
- 200 — PROPOSED CONTOUR
- - - - - CLEARING LIMITS

NOTES:

1. SITE GRADING IS PRELIMINARY AT THIS TIME AND IS SHOWN FOR CONCEPTUAL PURPOSES ONLY. FINAL GRADING IS SUBJECT TO CHANGE IN ORDER TO MORE ACCURATELY BALANCE CUT AND FILL QUANTITIES.



KEY MAP



SEE SHEET PP-06 FOR CONTINUATION

File: \\smc\eng\ESM-085\2090\04\022\PP-12.dwg  
 Plotted: 6/20/2025 2:41 PM  
 Plotted By: Corinne Corbett

REVISIONS		
NO.	DESCRIPTION/DATE	BY

06/20/2025

**ESM CONSULTING ENGINEERS, LLC**  
 33400 8th Ave S, Suite 205  
 Federal Way, WA 98003  
 (206) 835-6113  
 (206) 835-9905  
 www.esmcivil.com  
 Civil Engineering | Land Surveying | Project Management | Landscape Architecture

**ESM**  
 CONSULTING ENGINEERS, LLC  
 33400 8th Ave S, Suite 205  
 Federal Way, WA 98003  
 (206) 835-6113  
 (206) 835-9905  
 www.esmcivil.com  
 Civil Engineering | Land Surveying | Project Management | Landscape Architecture

**MONTEBANC MANAGEMENT, LLC**  
**PINNACLE AT LIBERTY BAY SUBDIVISION**  
 PRELIMINARY GRADING PLAN  
 CITY OF POULSBORO WASHINGTON

JOB NO.:	2090-004-022
DWG. NAME:	PP-12
DESIGNED BY:	
DRAWN BY:	
CHECKED BY:	
DATE:	6/20/2025
DATE OF PRINT:	
<b>PP-12</b>	
12 OF 26 SHEETS	