

## 5 YEAR SALES TAX RECAP -

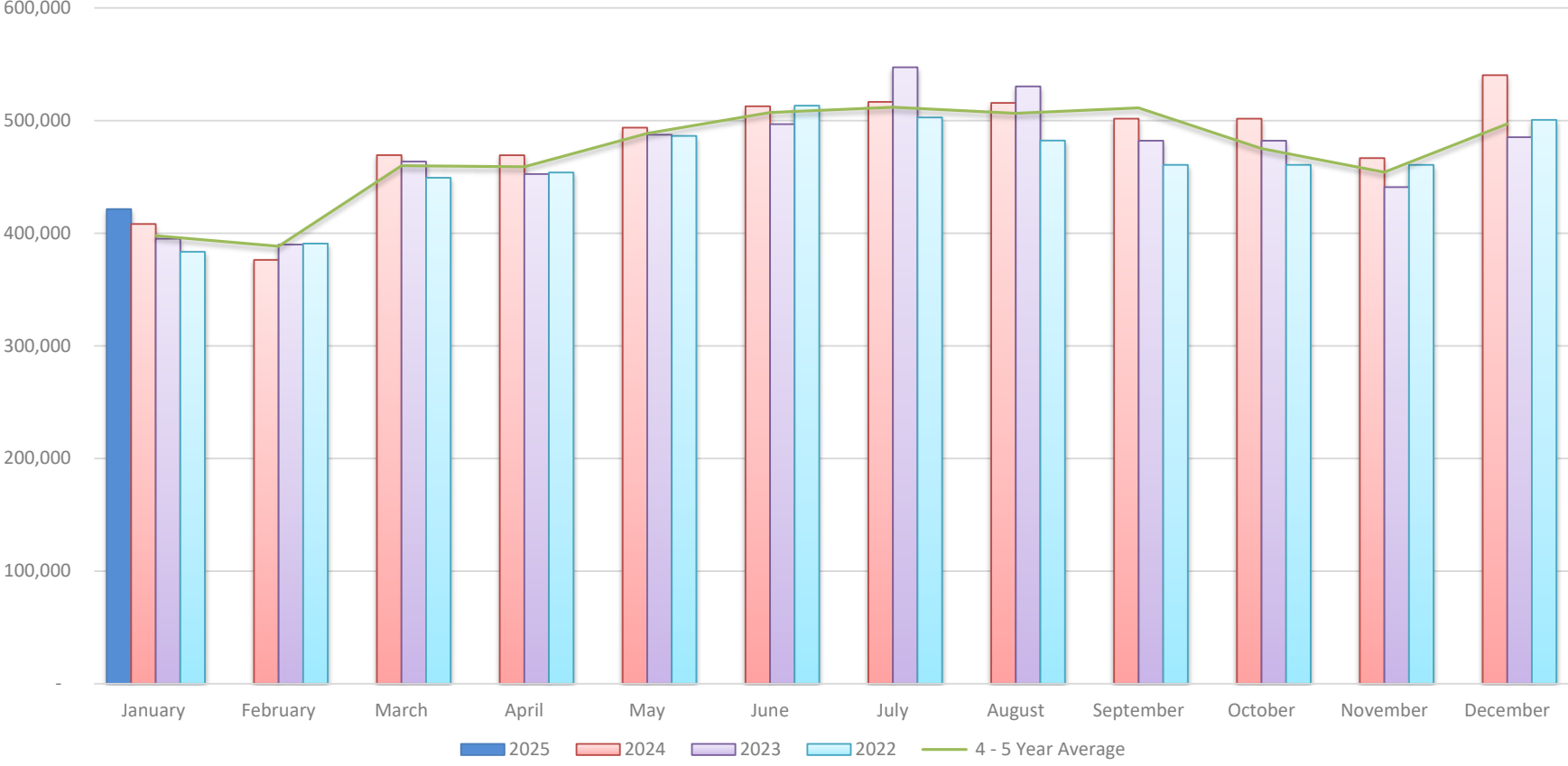
<i>Month Generated</i>	<u>2022</u>	<u>2023</u>	<u>2024</u>	<u>2025</u>	<u>2026</u>	<u>% 2026 To 2025</u>	<u>Aver/Month</u>	<u>Ranking</u>
JANUARY	380,609	383,460	395,083	408,144	421,436	103.26%	397,746	11
<b>YEAR TO DATE</b>	<b>380,609</b>	<b>383,460</b>	<b>395,083</b>	<b>408,144</b>	<b>421,436</b>	<b>103.26%</b>		
FEBRUARY	396,618	390,764	389,880	376,251		0.00%	388,378	12
MARCH	457,148	449,183	463,574	469,287		0.00%	459,798	9
APRIL	460,727	453,855	452,491	469,193		0.00%	459,066	8
MAY	487,291	486,361	487,393	493,684		0.00%	488,682	6
JUNE	505,411	513,211	496,797	512,661		0.00%	507,020	3
JULY	480,700	502,721	547,279	516,545		0.00%	511,811	1
AUGUST	497,774	482,242	530,302	515,629		0.00%	506,486	4
SEPTEMBER	506,375	493,068	501,033	544,650		0.00%	511,281	2
OCTOBER	455,543	460,645	482,100	501,642		0.00%	474,982	7
NOVEMBER	448,177	460,633	440,894	466,638		0.00%	454,086	10
DECEMBER	461,783	500,584	485,191	540,259		0.00%	496,954	5
<b>TOTALS</b>	<b>5,538,154</b>	<b>5,576,727</b>	<b>5,672,019</b>	<b>5,814,582</b>	<b>421,436</b>	<b>7.25%</b>	<b>5,656,293</b>	
<i>January % of Actual Collected</i>	<b>6.87%</b>	<b>6.88%</b>	<b>6.97%</b>	<b>7.02%</b>				
<i>January % of Budget Collected</i>	<b>9.06%</b>	<b>9.13%</b>	<b>7.75%</b>	<b>7.42%</b>	<b>7.53%</b>	<b>8.33%</b>		
<i>Annual Budget</i>	<b>4,200,000</b>	<b>5,100,000</b>	<b>5,500,000</b>	<b>5,600,000</b>	<b>5,700,000</b>	Difference YTD <b>13,292</b>		

Sales Tax Revenue by SIC Code YTD 2026 (Includes 2 months prior year)		
		% of total
Other	18,562	1.30%
Agriculture	400	0.03%
Mining	551	0.04%
Utilities	455	0.03%
Construction	201,055	14.08%
Manufacturing	20,039	1.40%
Wholesaling	67,679	4.74%
Retail Trade	702,614	49.19%
Transportation	11,579	0.81%
Information	74,271	5.20%
Finance & Insurance	5,497	0.38%
Real Estate	19,737	1.38%
Technical Services	39,008	2.73%
Management	85	0.01%
Admin Support	53,774	3.76%
Educational Svcs	6,658	0.47%
Health Care	8,135	0.57%
Arts, Entertainment	5,395	0.38%
Accom & Food Svcs	157,034	10.99%
Other Services	34,871	2.44%
Public Administration	934	0.07%
Total	\$1,428,333	100%

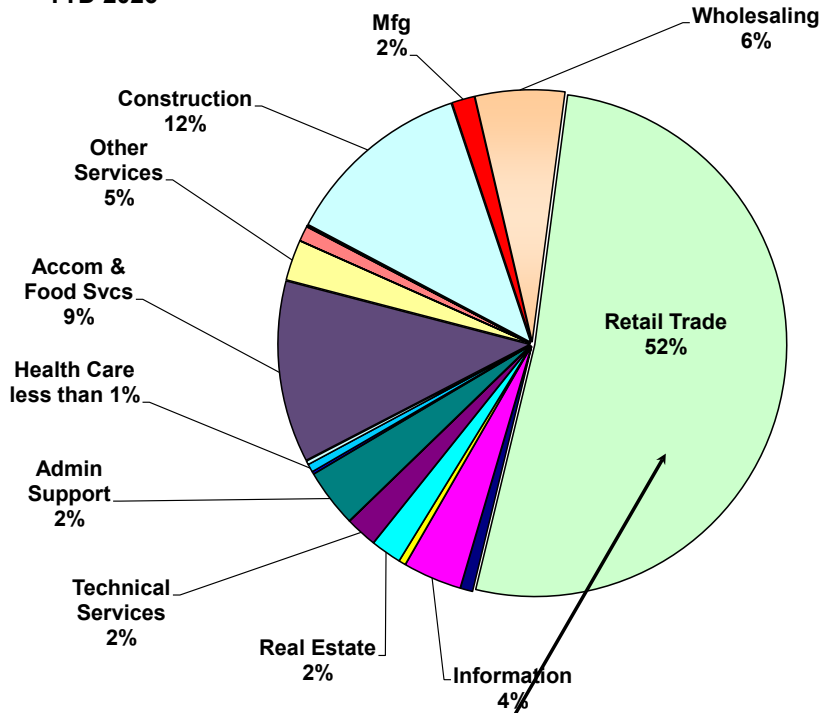
Sales Tax Revenue by SIC Code YTD 2025 (Includes 2 months prior year)		
		% of total
Other	13,297	1.00%
Agriculture	565	0.04%
Mining	417	0.03%
Utilities	1,194	0.09%
Construction	166,599	12.49%
Manufacturing	19,584	1.47%
Wholesaling	72,091	5.40%
Retail Trade	688,240	51.58%
Transportation	9,349	0.70%
Information	52,861	3.96%
Finance & Insurance	5,398	0.40%
Real Estate	25,134	1.88%
Technical Services	29,357	2.20%
Management	33	0.00%
Admin Support	54,908	4.12%
Educational Svcs	2,174	0.16%
Health Care	5,904	0.44%
Arts, Entertainment	3,305	0.25%
Accom & Food Svcs	153,780	11.53%
Other Services	29,945	2.24%
Public Administration	93	0.01%
Total	\$1,334,229	100%

<u>Variance</u>	<u>% of</u>
<u>Incr (Decr)</u>	<u>Incr (Decr)</u>
5,264	40%
(165)	-29%
134	32%
(739)	-62%
34,456	21%
455	2%
(4,412)	-6%
14,374	2%
2,229	24%
21,410	41%
99	2%
(5,397)	-21%
9,651	33%
52	0%
(1,134)	-2%
4,484	206%
2,230	38%
2,090	63%
3,254	2%
4,926	16%
841	905%
94,104	7%

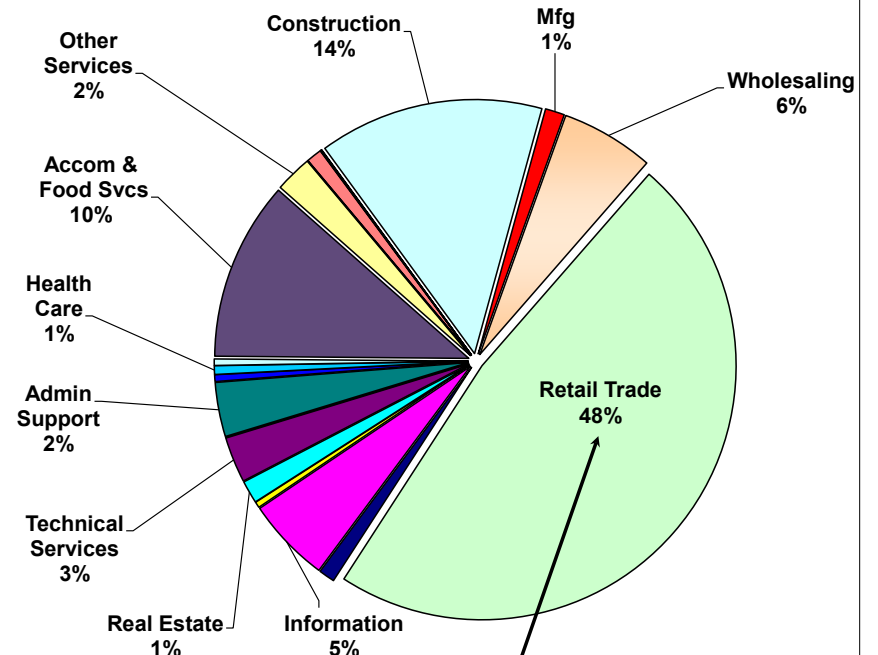
### Sales Tax 5 Year Trend



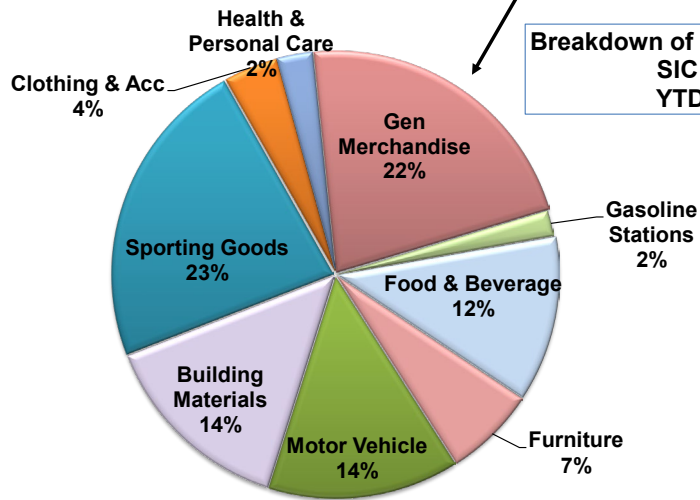
**Sales Tax Revenue  
YTD 2026**



**Sales Tax Revenue by  
YTD 2025**



**Breakdown of Retail Sales Tax  
SIC Code  
YTD 2026**



**Breakdown of Retail Sales Tax  
SIC code  
YTD 2025**

